

DEFINITIEF ONTWERP

NIEUWBOUW VAN POLANENPARK, WASSENAAR

I.o.v. Wassenaarsche Bouwstichting

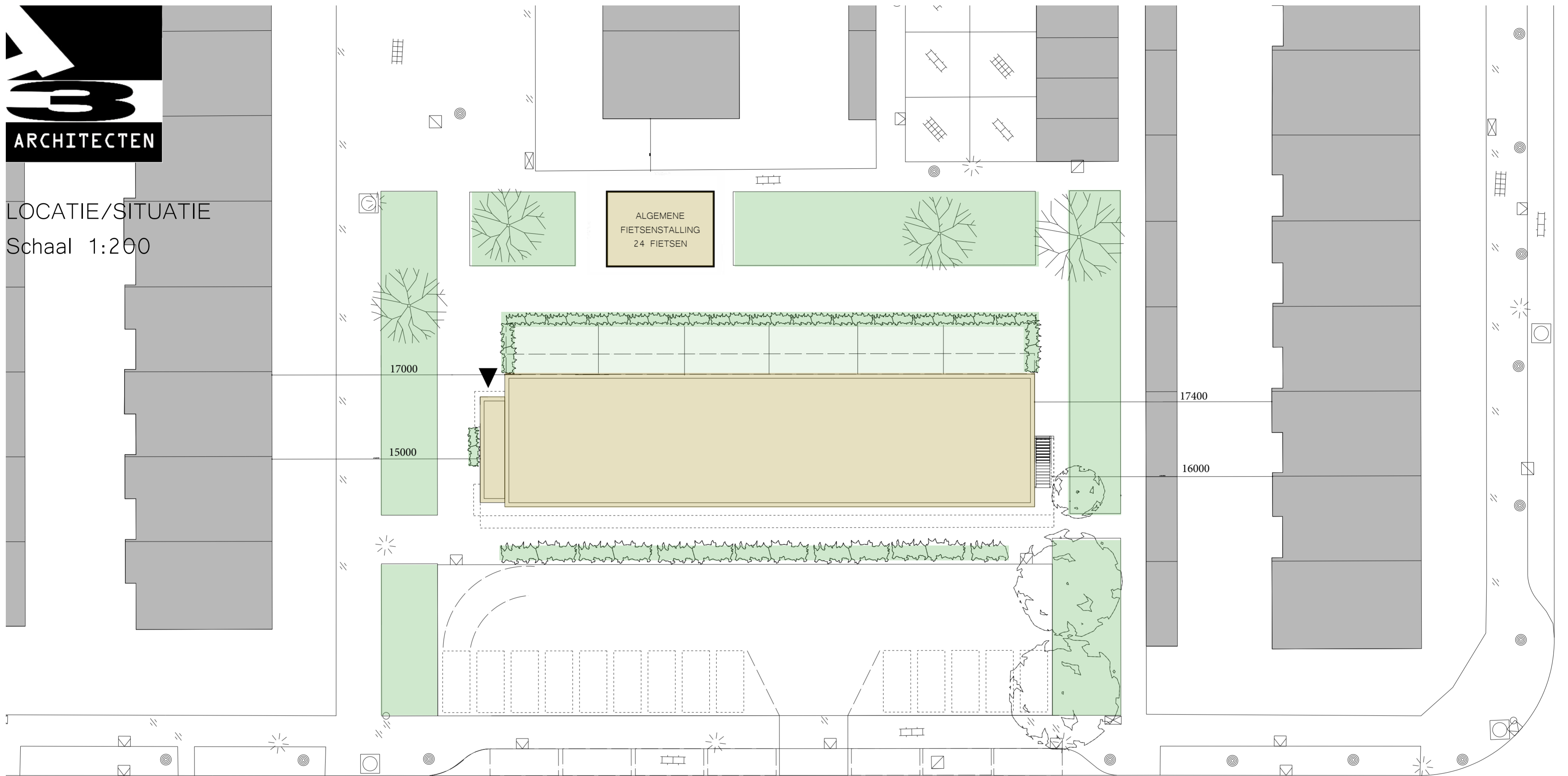
Datum 17.10.2017

Werknr. 1334

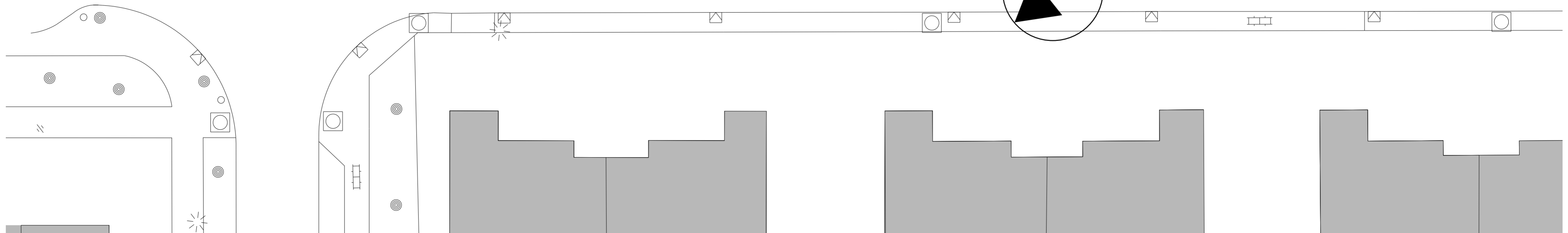
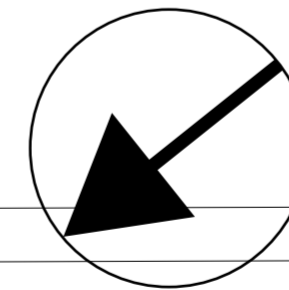




LOCATIE/SITUATIE
Schaal 1:200



Van Polanenpark



PLATTEGRONDEN

Schaal 1:100

GO Verblijfruimtes:

Slaapkamer 14m²

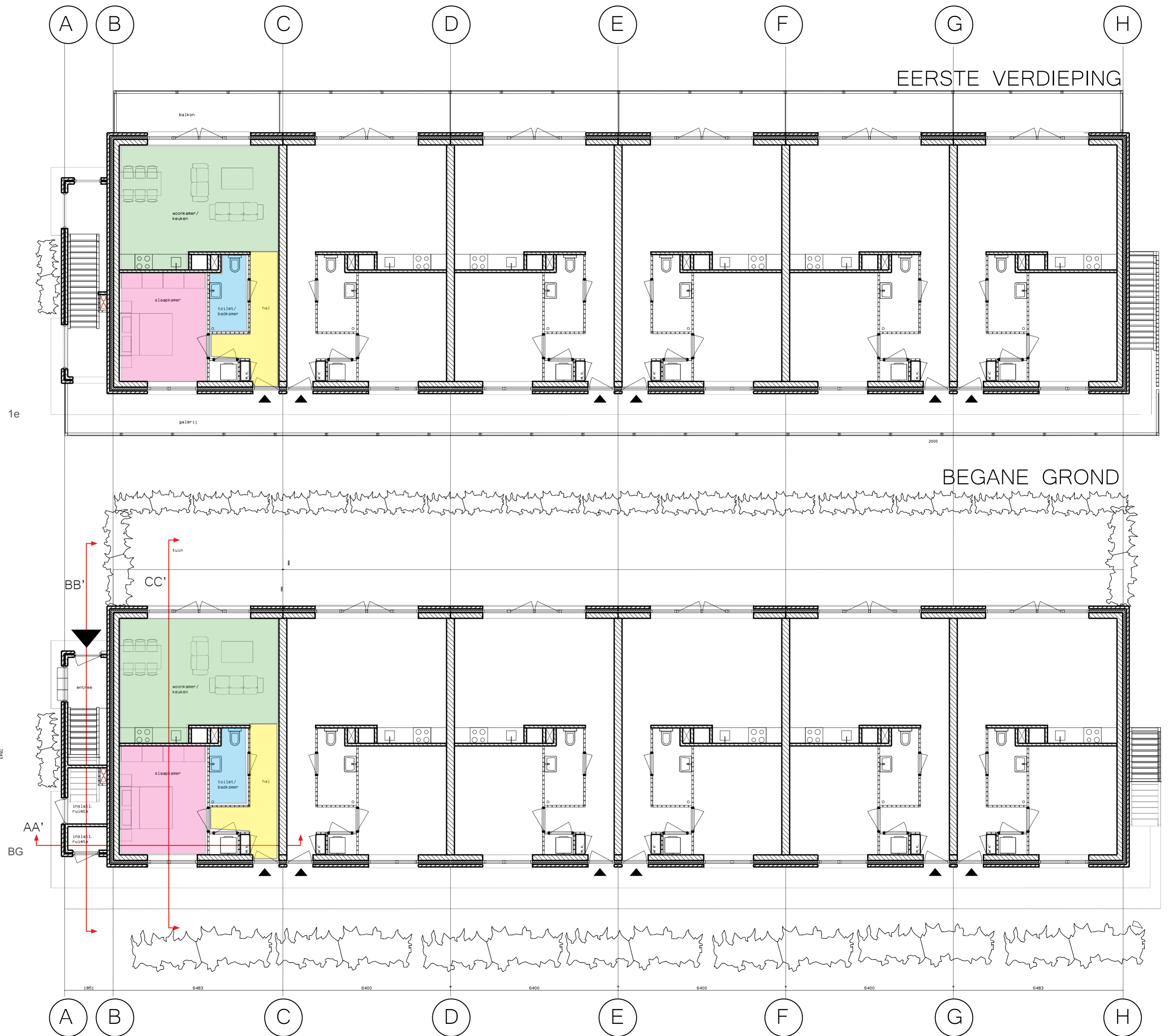
Badkamer 4.1m²

Hal 7.1 m²

Woonkamer/Keuken 26.7

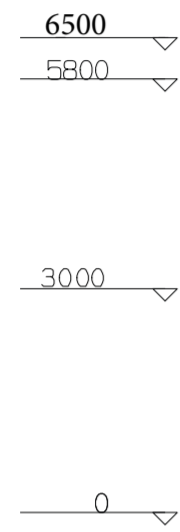
GO Totale woning = 55.1 m²

- Woonkamer/Keuken
- Badkamer/Toilet
- Gang
- Slaapkamer

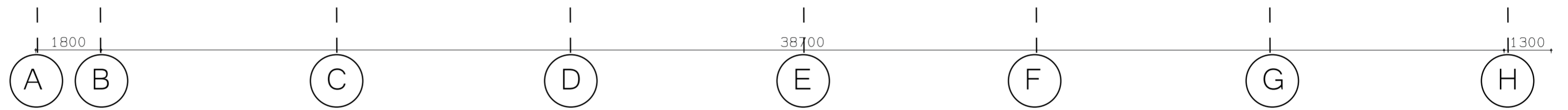


GEVELS

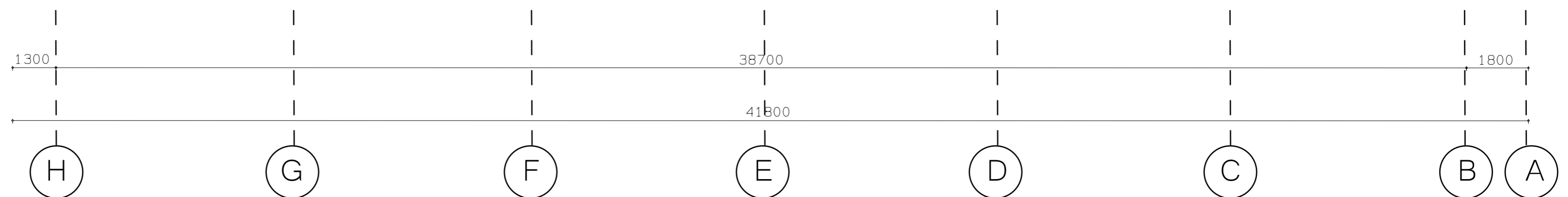
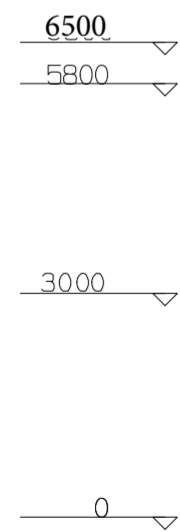
Schaal 1:100

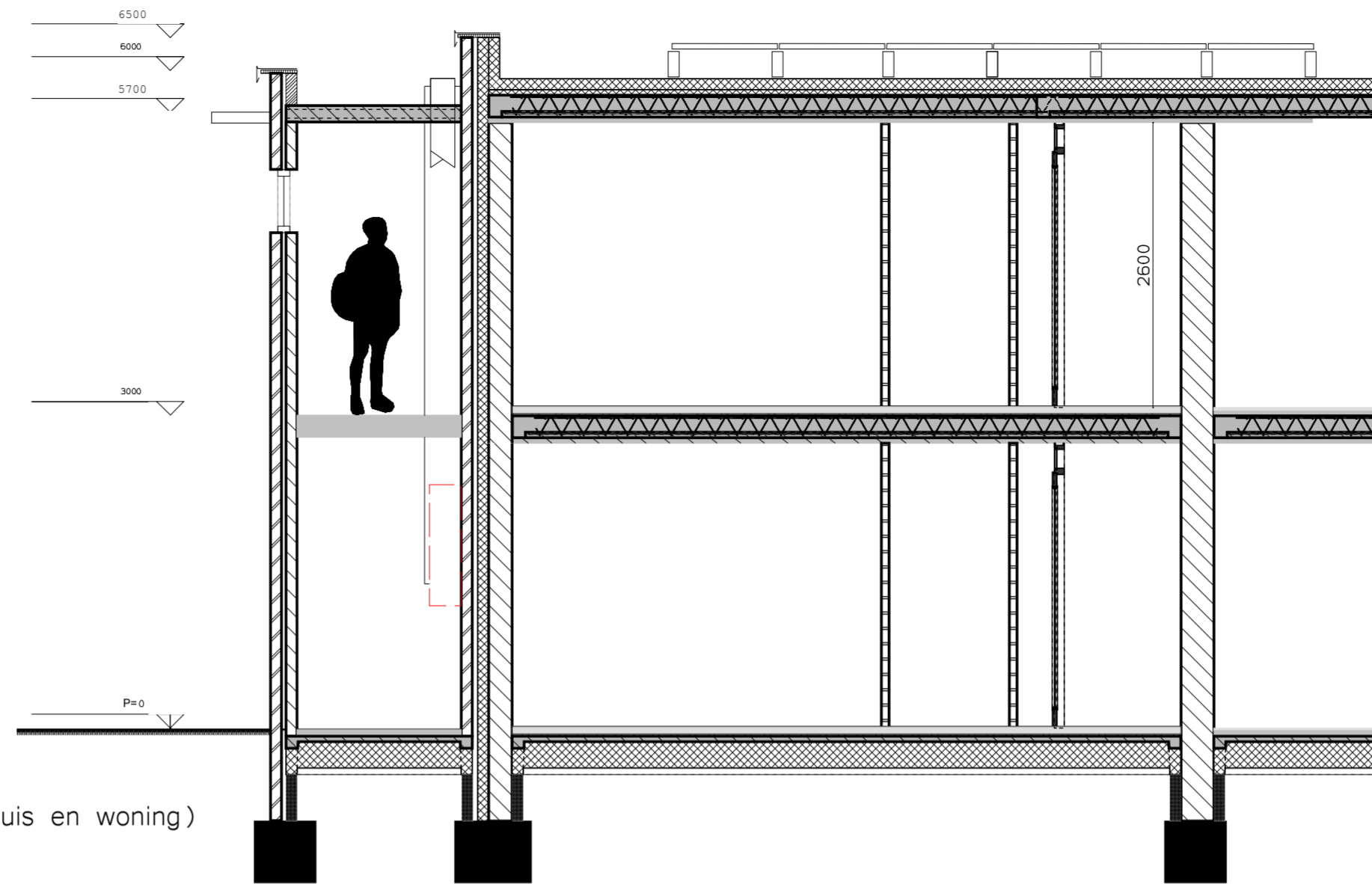


VOORGEVEL

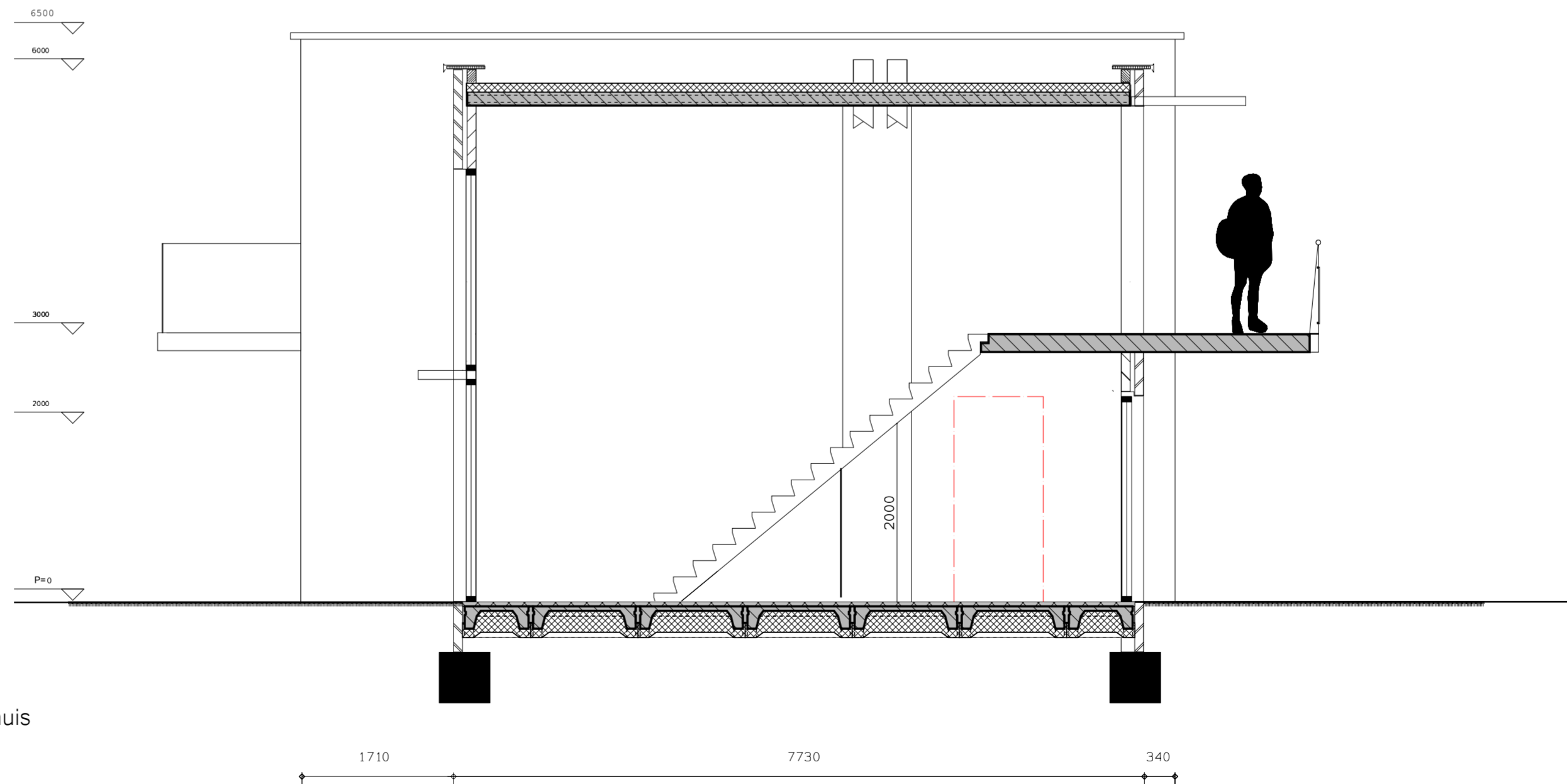


ACHTERGEVEL





AA' LANGSDOORSNEDE (trappenhuis en woning)

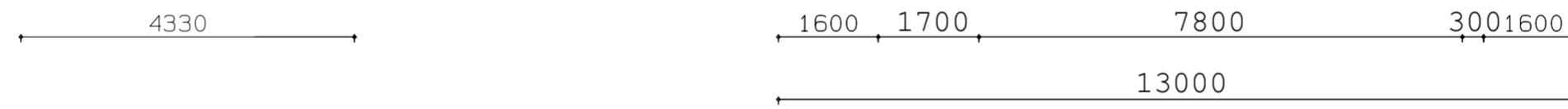
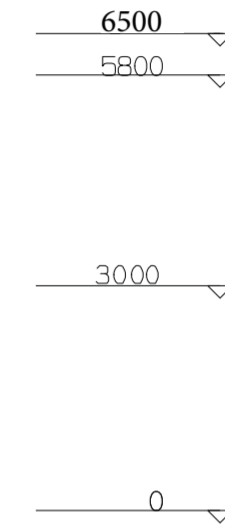


BB' DWARSDOORSNEDE trappenhuis

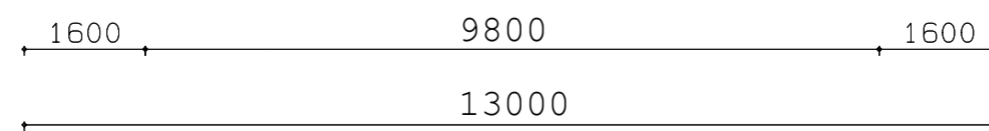
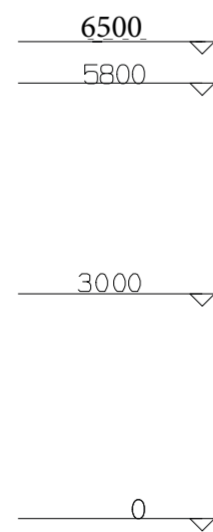
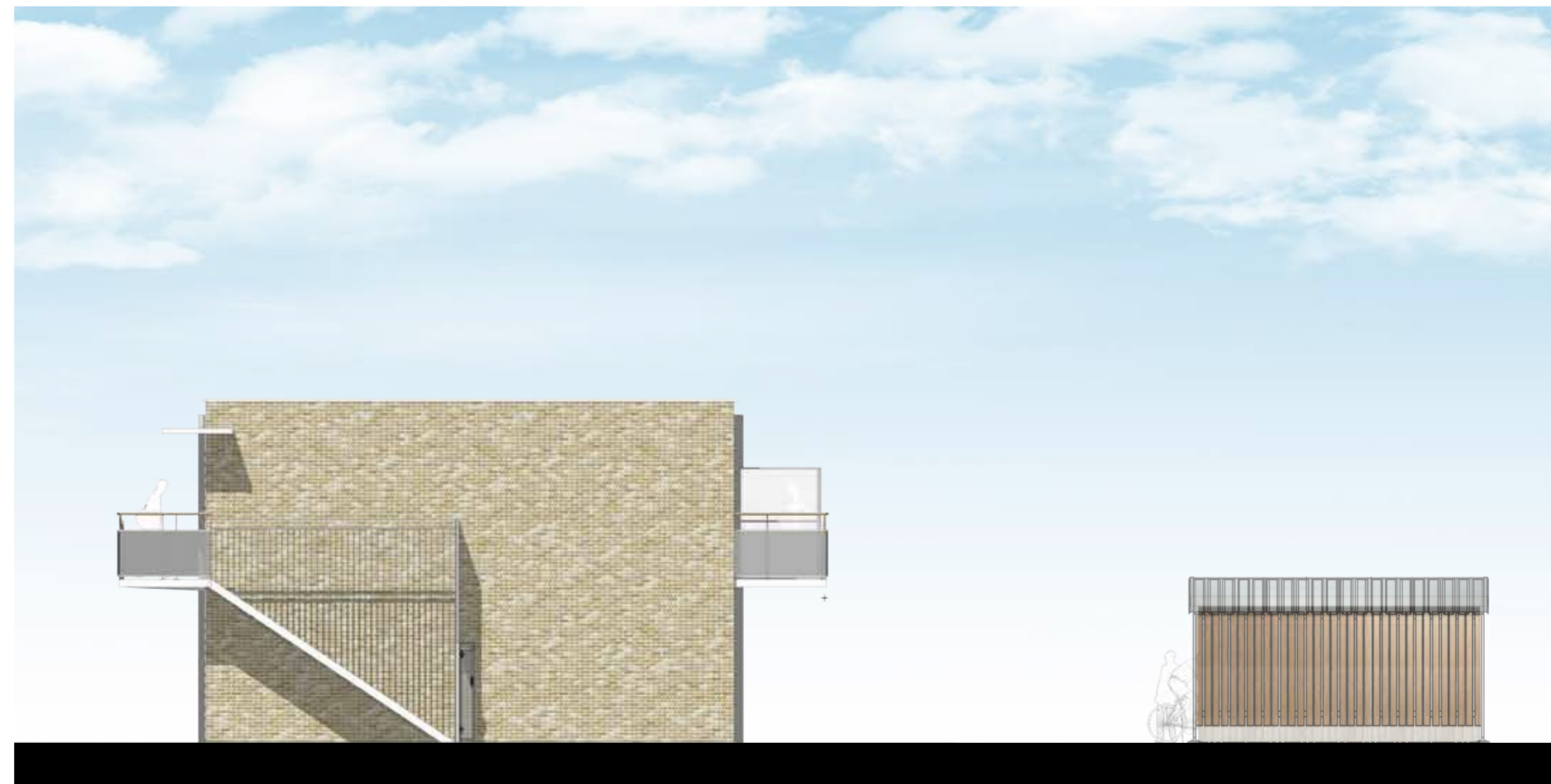


GEVELS
Schaal 1:100

GEVEL NOORD _ ENTREE



GEVEL ZUID





KLEUR - MATERIAALSTAAT

HOOFDVOLUME - METSELWERK, BRONS GEMELEERD
TRAPPENHUIS - VERMETSELD MET VERSPRINGING OM DE LAAG (2CM)
KOZIJN ENTREE - HOUT, WIT
KOZIJN VOORDEUR - HOUT, WIT
RAAMKOZIJNEN - KUNSTSTOF, WIT
VOORDEUREN - HOUT, KLEUR NTB
DRAAIENDE DELEN - KUNSTSTOF, GRIJS
VENT. ROOSTERS VOORGEVEL - VERDEKT
VENT. ROOSTERS ACHTERGEVEL - GRIJS, IN GLAS
BALKON EN GALERIJHEK - STAAL, WIT GEPOEDERCOAT
GLAZEN PANELEN - GLAS, GELAAGD MET DOORSCHIJNEND WITTE FOLIE
LUIFEL - PREFAB ALU-SANDWICH, WIT
POSTKASTEN - VOLKERN GRIJS

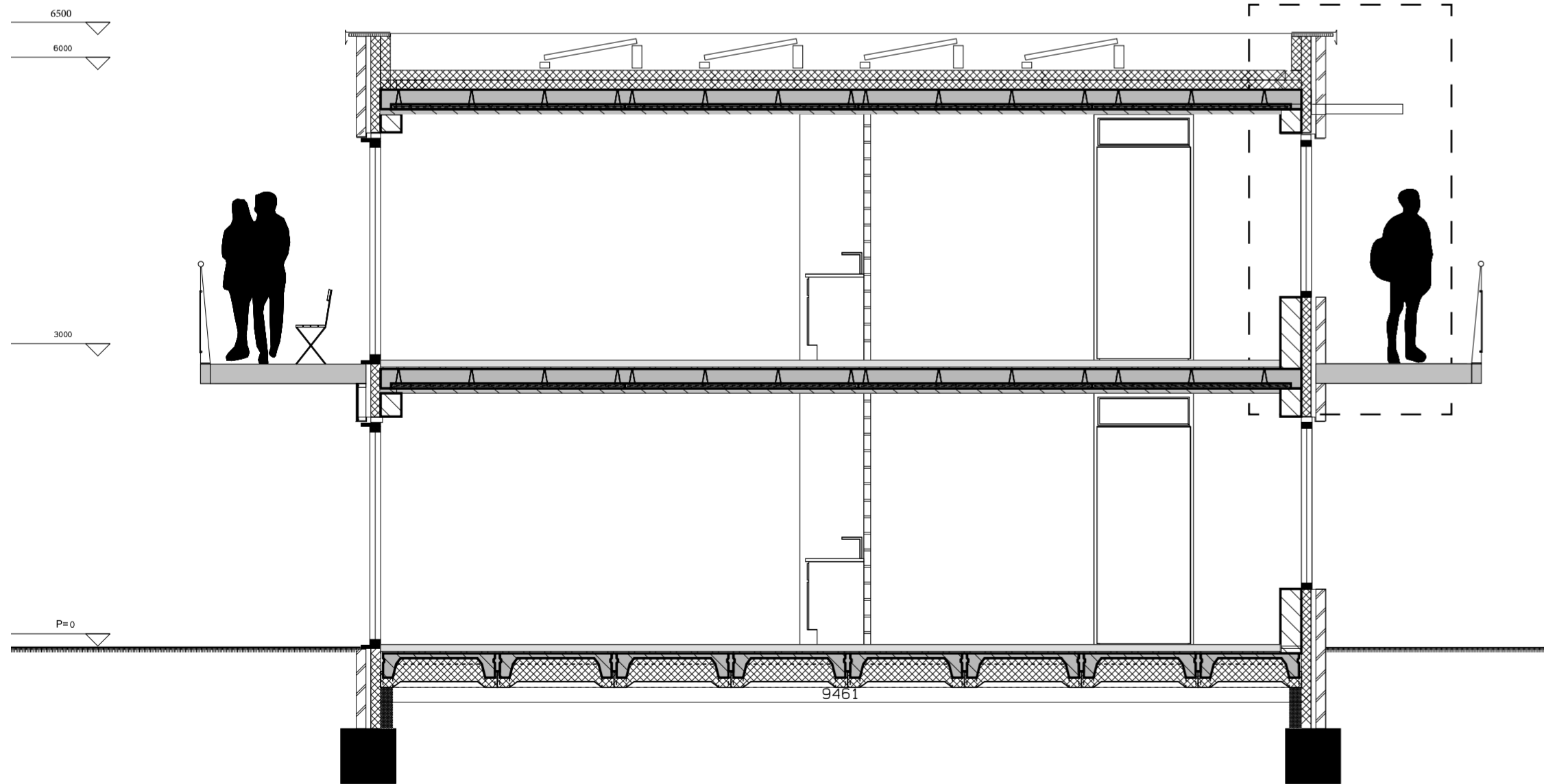
DOORSNEDE

Schaal 1:50

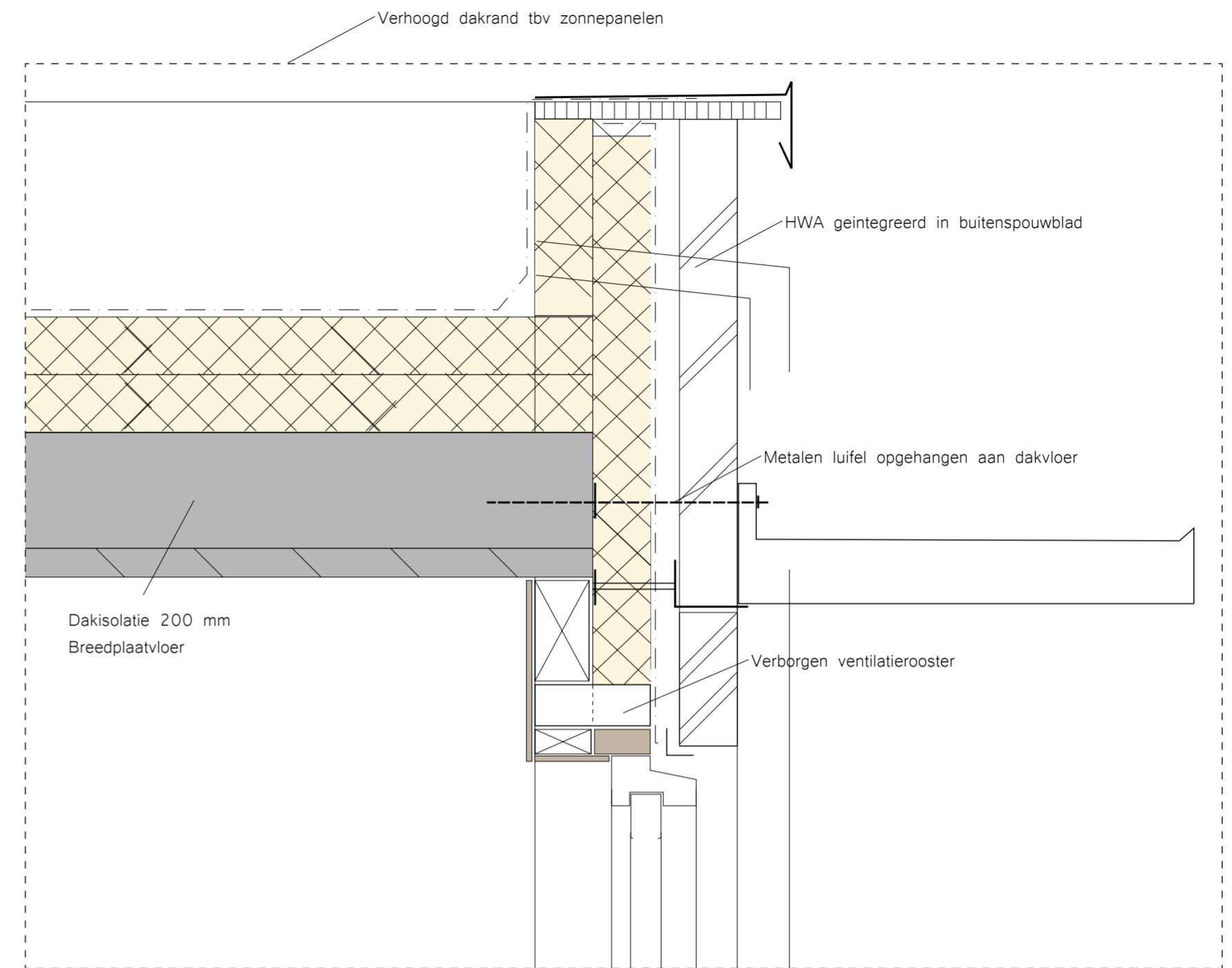
CONCEPTDETAILS

Schaal 1:10

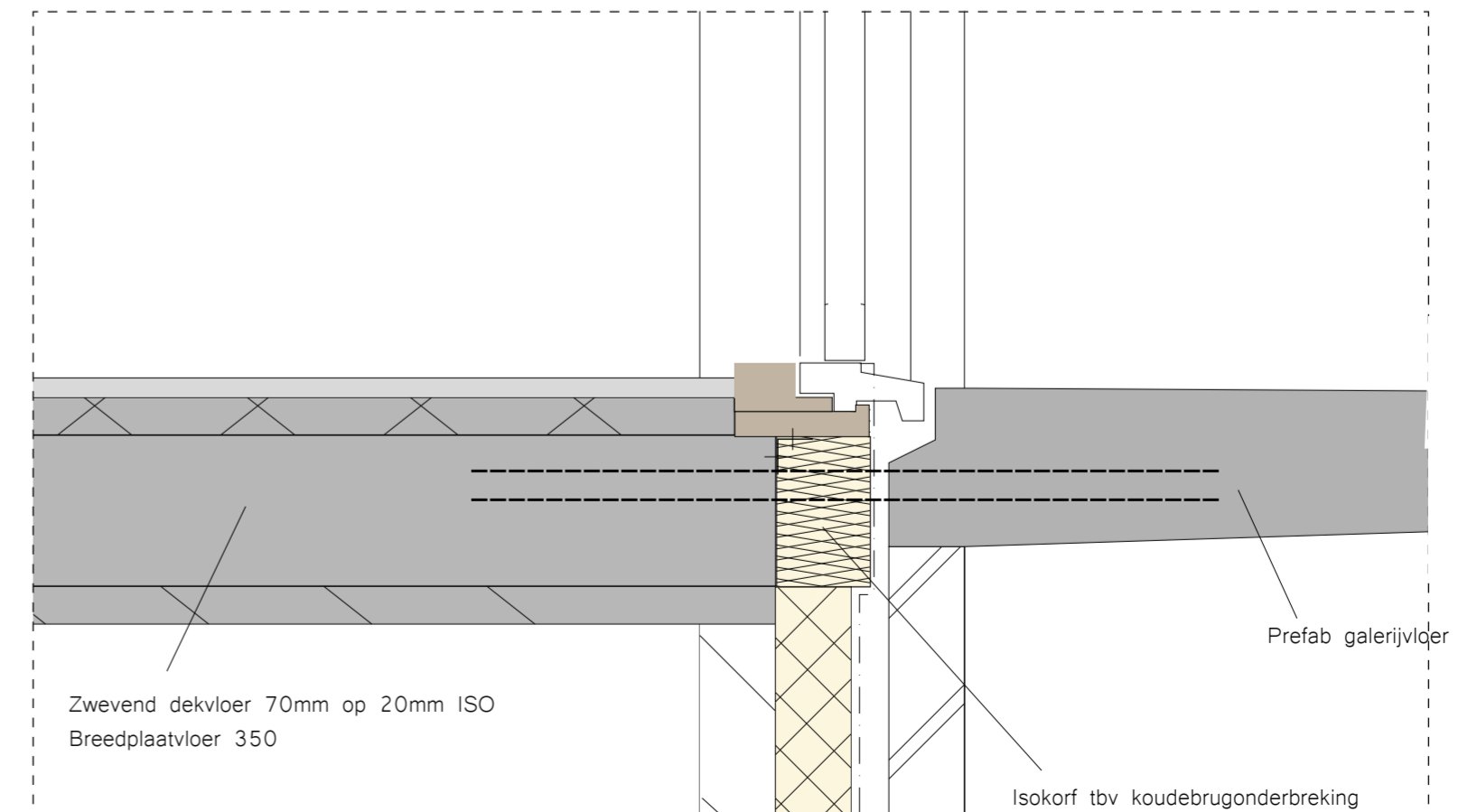
CC' DWARSDOORSNEDE woning



DETAIL 1 (Aansluiting luifel, integratie ventilatieroosters ter plaatse van deur)



DETAIL 2 (Aansluiting deur op balkon/galerij)



IMPRESSIE NIEUWBOUW VAN POLANENPARK, WASSENAAR

