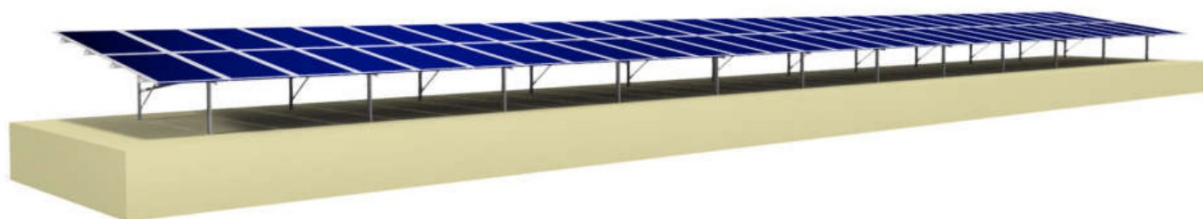


1 GROUND MOUNTING SYSTEM DESCRIPTION

- **Nº ROWS** 2
- **Nº COLUMNS** 30
- **MODULE DISPOSITION** Portrait
- **TILT** 8°
- **MODULE INSTALLATION METHODE** Clamps
- **MODULE DIMENSIONS** 2382x1134x30mm
- **ANCHORING** Ramming + Pre-Drilling
- **DISTANCE GROUND** 0.9±0.1m
- **MAXIMUM SLOPE** 5%EW / 5%NS

2 REPRESENTATIVE STRUCTURE DESIGN

*Generic image. It may not correspond to the design offered.



3 COMPONENTS MATERIALS

- **STRUCTURE**
 - ☒ Steel quality S275JR & S355JR hot dip galvanized according to UNE-EN/ISO 1461 standard in coating thickness and UNE-EN/ISO 14713 standard for duration of corrosion
 - ☒ Steel quality S280GD & S350GD Magnelis ZM coating according to UNE-EN/ISO 10346
- **CLAMPS** Aluminium 6063T6
- **SCREWS** Screwed connections of HDG 8.8 (structural components) + Inox A2 (modules)

4 NORMATIVE

Actions on the structures - Wind: NEN EN 1991-1-4

Actions on the structures - Snow: NEN EN 1991-1-3

Calculations according to Eurocode 3.

5 COMMENTS

Each structure is Bipole, with 24 piles per table.

Corrosion warranty: 25 years* (pending complete soil chemical analysis).

